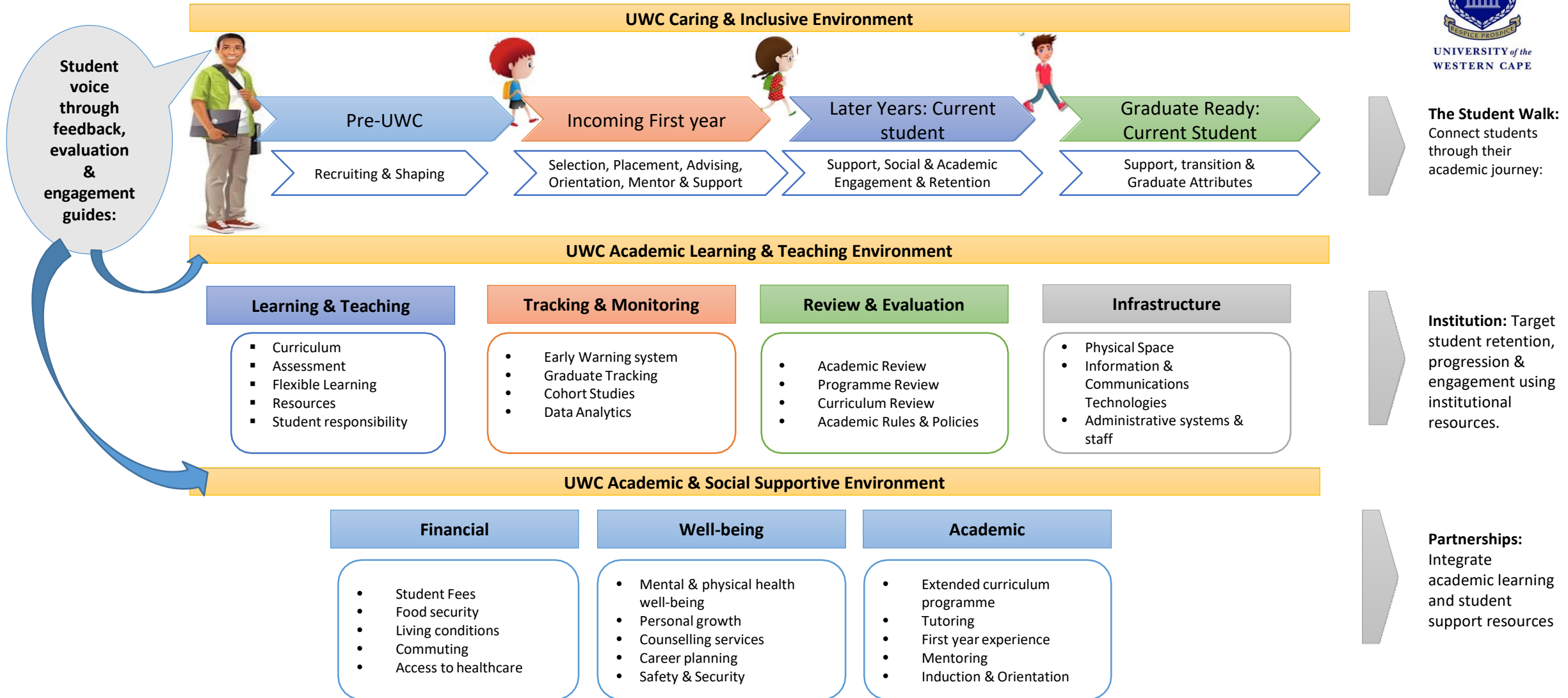


UWC Student Retention and Success Framework



UNIVERSITY of the WESTERN CAPE



Source: University of the Western Cape Student Retention and Success Working Document, Brown & Pather (2018)

Student retention & Success: Starting point at-risk subjects

- What is Phase 1 of the project?
- Identifying the problem: Low UG thru-put rates
 - Identifying High priority modules
 - Identify and address issues with high priority students in these modules
 - Creating common vocabulary for terms used
 - Linking to UWC student R&S framework
- What are the objectives?
 - **Identifying pathways** (need a clear pathway for all students for HP modules) for students in HP modules. Year 1 will have formulated some indicators
- What are the indicators for phase 1 of the project?

Implementation Plan for Year 1

- Parallel process – looking at HP modules over a programme –
- Eliz. Identify one programme that has the highest HP modules that has an impact on student success
- Maths turn-around project (have conversations with Honji, David etc)

Timelines:

- Identification of programme/s, (maybe 3 highest programmes) – Vanessa & Elizabeth
- meet with Maths project teams
- Conversations with lecturers on HP modules –identify issues/challenges, triangulate with HoD, T&L specialists and students. Interview lecturers of these modules at higher levels.
- Identifying HP students within the modules
- Planning stage in Y1, - need to be data driven, identification of pathways, documentation on pathways,
- Y2 implementation

Meeting

- SteerCom – monthly updates (check with DVCs) – August
- Core group – Bi-weekly – 11 August 2020 @ 9am
 - Working group/s? or task teams
 - Need to invite Liz for the research part
- Need to work on implementation plan for year 1

